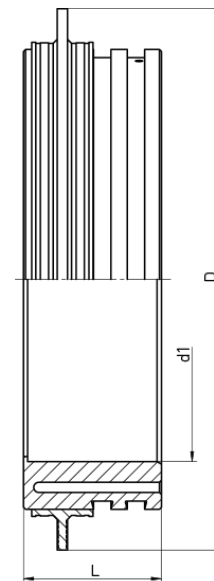


ELECTROFUSION CONCRETE SHAFT ADAPTER



for permanently sealed manhole connections
with integrated heating coils
4,0 mm pin
with angle movement $\pm 3^\circ$ and pipe stop

PE100-RC



Art. No.	d1 [mm]	D [mm]	L [mm]	PFA [bar]	kg
36013160-EF	160	342	135	0,5	3,43

Other lengths on request
Without angle compensation on request
Without pipe stop on request

For questions, please feel free to contact us at: Tel. + 49 281 98 414 - 0