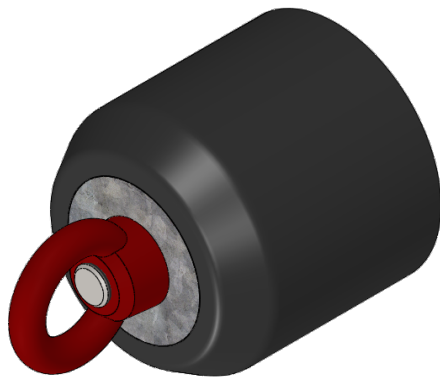


closed version

PE100



SDR 11

| Art. No. | d1 [mm] | le1 [mm] | L [mm] | kg |
|----------|------------|-------------|-----------|-------|
| 46106352 | 355 | 225 | 458 | 39,82 |

The towing rope has to be attached to the pull head using a rotating shackle
 Special versions, e.g. for swagelining procedure on request
 other pulling forces on request

For questions, please feel free to contact us at: Tel. + 49 281 98 414 - 0